

# Severe hypoxemia during veno-venous extracorporeal membrane oxygenation: exploring the limits of extracorporeal respiratory support

Liane Brescovici Nunes,<sup>I</sup> Pedro Vitale Mendes,<sup>I,III</sup> Adriana Sayuri Hirota,<sup>I,III</sup> Edzangela Vasconcelos Barbosa,<sup>I</sup> Alexandre Toledo Maciel,<sup>I,III</sup> Guilherme Pinto Paula Schettino,<sup>III</sup> Eduardo Leite Vieira Costa,<sup>II,III</sup> Luciano Cesar Pontes Azevedo,<sup>I,III</sup> Marcelo Park,<sup>I,III</sup> ECMO Group<sup>IV</sup>

<sup>I</sup>Hospital das Clínicas da Faculdade de Medicina da Universidade de São Paulo, Emergency Department, Intensive Care Unit, São Paulo/SP, Brazil. <sup>II</sup>Hospital das Clínicas da Faculdade de Medicina da Universidade de São Paulo, Respiratory Intensive Care Unit, São Paulo/SP, Brazil. <sup>III</sup>Hospital Sírio Libanês, Intensive Care Unit, São Paulo/SP, Brazil. <sup>IV</sup>ECMO Group Comprises Hospital Sírio Libanês and Hospital das Clínicas, São Paulo/SP, Brazil.

**OBJECTIVE:** Veno-venous extracorporeal oxygenation for respiratory support has emerged as a rescue alternative for patients with hypoxemia. However, in some patients with more severe lung injury, extracorporeal support fails to restore arterial oxygenation. Based on four clinical vignettes, the aims of this article were to describe the pathophysiology of this concerning problem and to discuss possibilities for hypoxemia resolution.

**METHODS:** Considering the main reasons and rationale for hypoxemia during veno-venous extracorporeal membrane oxygenation, some possible bedside solutions must be considered: 1) optimization of extracorporeal membrane oxygenation blood flow; 2) identification of recirculation and cannula repositioning if necessary; 3) optimization of residual lung function and consideration of blood transfusion; 4) diagnosis of oxygenator dysfunction and consideration of its replacement; and finally 5) optimization of the ratio of extracorporeal membrane oxygenation blood flow to cardiac output, based on the reduction of cardiac output.

**CONCLUSION:** Therefore, based on the pathophysiology of hypoxemia during veno-venous extracorporeal oxygenation support, we propose a stepwise approach to help guide specific interventions.

**KEYWORDS:** Extracorporeal Membrane Oxygenation; Hypoxemia; Respiratory Failure; Respiratory Insufficiency.

Nunes LB, Mendes PV, Hirota AS, Barbosa EV, Maciel AT, Schettino GP, et al. Severe hypoxemia during veno-venous extracorporeal membrane oxygenation: exploring the limits of extracorporeal respiratory support. *Clinics*. 2014;69(3):173-178.

Received for publication on May 7, 2013; First review completed on June 23, 2013; Accepted for publication on August 15, 2013

E-mail: p.mendes@hc.fm.usp.br

Tel.: 55 11 2661-2771

## INTRODUCTION

Veno-venous extracorporeal membrane oxygenation (VV-ECMO) has been widely used to support patients with severe acute respiratory distress syndrome (1-5). In some patients, however, extracorporeal support fails to restore arterial oxygenation (6-8). Knowledge of the multiple mechanisms possibly underlying this failure to oxygenate is essential for troubleshooting this concerning clinical situation (6,9). In this manuscript, we use four clinical vignettes to explore the potential mechanisms of severe

hypoxemia during VV-ECMO and to suggest possible bedside solutions.

## CALCULATIONS

For the calculations, we used the standard formulas: (9,10)

- ECMO recirculation ratio (%) =  $(\text{SatdO}_2 - \text{ScvO}_2) \times 100 / (\text{SatrO}_2 - \text{ScvO}_2)$ ;
- Pulmonary shunt (%) =  $(\text{CcO}_2 - \text{CvO}_2) \times 100 / (\text{CcO}_2 - \text{CaO}_2)$ ;
- $\text{CaO}_2$  (mL O<sub>2</sub> / 100 mL blood) =  $1.36 \times \text{Hb} \times \text{Arterial SatO}_2 + 0.0031 \times \text{PaO}_2$ ;
- $\text{CvO}_2$  (mL O<sub>2</sub> / 100 mL blood) =  $1.36 \times \text{Hb} \times \text{ScvO}_2 + 0.0031 \times \text{PvO}_2$ ; and
- $\text{CcO}_2$  (mL O<sub>2</sub> / 100 mL blood) =  $1.36 \times \text{Hb} \times 1 + 0.0031 \times (\text{Ventilator FiO}_2 \times 690)$ .

SatdO<sub>2</sub> – oxygen saturation at the drainage cannula;  
ScvO<sub>2</sub> – oxygen saturation at the superior vena cava; SatrO<sub>2</sub>

**Copyright** © 2014 CLINICS – This is an Open Access article distributed under the terms of the Creative Commons Attribution Non-Commercial License (<http://creativecommons.org/licenses/by-nc/3.0/>) which permits unrestricted non-commercial use, distribution, and reproduction in any medium, provided the original work is properly cited.

No potential conflict of interest was reported.

**DOI:** 10.6061/clinics/2014(03)05



– oxygen saturation at the return cannula; CxO<sub>2</sub> – content of oxygen in arterial (a), venous (v), or pulmonary capillary (c) blood sample.

**CLINICAL VIGNETTES**

Severe hypoxemia was diagnosed when PaO<sub>2</sub> persisted at less than 50 mm Hg in two arterial blood samples at least 60 minutes apart with ongoing VV-ECMO support. Blood samples were collected while the patient slowly performed three to four inspirations, to average the cyclic variations of PaO<sub>2</sub> during the respiratory cycle, which is common in patients with severe ARDS (11). All ECMO-supported patients were cannulated using a veno-venous configuration. Patients 1, 3, and 4 were cannulated using the femoro-jugular approach, in which a single, large, multiperforated drainage cannula was inserted into the femoral vein and was advanced to the cavo-atrial junction. The return cannula was a single-stage catheter inserted into the right internal jugular vein and advanced to the superior vena cava. A femoro-femoral approach was used on patient 2, in which both the drainage and return cannulae were inserted through femoral veins. The first was positioned in the superior cavo-atrial junction, and the second, in the inferior vena cava.

The clinical characteristics of the patients are shown in Table 1. In Table 2, the characteristics of the patients at the time of the diagnosis of severe hypoxemia are described. Cardiac output was estimated by transthoracic echocardiography using the velocity time integral technique. The ECMO device consisted of a centrifugal magnetic pump with a polymethylpentene oxygenation membrane (Rotaflo/Jostrá Quadrox - D, Maquet Cardiopulmonary AG, Hirrlingen, Germany).

**Table 1 - Characteristics of patients.**

	Patient 1	Patient 2	Patient 3	Patient 4
<b>General characteristics</b>				
Age – yr	14	18	17	30
Sex	F	F	M	F
Weight – kg	48	48	84	60
SAPS 3 at ECMO beginning	105	89	74	95
Etiological diagnosis of ARDS	SLE+alveolar hemorrhage	Lobar pneumonia + cystic fibrosis	Aspiration pneumonitis	Pneumocystosis + AIDS
ECMO retrieval	By ambulance	No retrieval	By ambulance	By ambulance
P/F ratio at ECMO beginning – mm Hg	36	43	47	55
PaCO <sub>2</sub> at ECMO beginning – mm Hg	36	117	47	55
<b>ECMO support characteristics</b>				
Configuration	Veno-venous	Veno-venous	Veno-venous	Veno-venous
Days on ECMO support	6	18	11	32
Anticoagulation	No	Yes	Yes	Yes
ECMO weaning and withdrawal	Yes	No	Yes	Yes
<b>ICU support while on ECMO</b>				
Vasopressors	Yes	Yes	Yes	Yes
Inotropes	Yes	No	Yes	No
Renal replacement therapy	Yes	No	Yes	Yes
Mechanical ventilation	Yes	Yes	Yes	Yes
Other hypoxemia rescue therapy	No	Alveolar recruitment	Nitric oxide	Nitric oxide
<b>90-day outcomes</b>				
Survival	Yes	No	No	No
Dialysis dependency	No	-----	-----	-----
Oxygen dependency	No	-----	-----	-----

ECMO - extracorporeal membrane oxygenation.  
SLE - systemic lupus erythematosus.  
AIDS - acquired immunodeficiency syndrome.  
ICU - intensive care unit.

**DISCUSSION**

**Hypoxemia mechanisms during VV-ECMO support**

Classically, during VV-ECMO, the extracorporeal trans-membrane oxygen transfer depends primarily on ECMO blood flow, and the transfer of carbon dioxide depends on sweep gas flow (10,12). Arterial blood oxygenation results from a more complex interplay among recirculation, ECMO blood flow, oxygenator function, patient cardiac output (CO), and pulmonary shunting (9).

For didactic reasons, the VV-ECMO support can be modeled by two oxygenators in series: the extracorporeal membrane and the native lungs (Figure 1 - Panel A) (9). Through the first oxygenator (VV-ECMO apparatus), blood drawn from the vena cava is pumped at a set flow rate, leaving a fraction of the venous return, i.e., of the CO (13), to proceed to the heart deoxygenated. Therefore, any elevation of the CO, unaccompanied by equal elevations in the ECMO blood flow, will result in a higher fraction of the CO returning deoxygenated to the right heart and to the native lungs (Figure 1 - Panel B). In this situation, the intuitive reaction would be to increase the VV-ECMO blood flow to improve oxygenation. This increase could, however, precipitate recirculation between the return and drainage cannulae, mitigating any possible benefits (9). In addition, high blood flows can cause hemolysis and collapse of the inferior vena cava over the drainage cannula, suddenly reducing blood flow and thus aggravating hypoxemia. Some authors have recognized an ECMO blood flow to cardiac output ratio greater than 0.6 as an index for ECMO efficiency (12).

The second oxygenator in the model (native lungs, Figure 1 – Panel A) will further improve blood oxygenation according to its residual function, which is inversely

**Table 2** - Clinical characteristics at the time of severe hypoxemia diagnosis.

	Patient 1	Patient 2	Patient 3	Patient 4
<b>ECMO support</b>				
ECMO day of hypoxemia occurrence *	2	2	1	5
ECMO blood flow – mL/min	5080	6000	6500	5300
Sweep gas flow – L/min	2	5	10	7
FiO <sub>2</sub>	1	1	1	1
Drainage cannula diameter – French	20	22	21	22
Atrial cannula diameter – French	20	22	21	22
Drainage cannula SatO <sub>2</sub> - %	58	85	61	64
Drainage cannula PO <sub>2</sub> – mm Hg	30	46	32	35
Return cannula SatO <sub>2</sub> - %	100	100	99	100
Return cannula PO <sub>2</sub> – mm Hg	180	402	220	163
Blood flow/cardiac output ratio	0.57	0.61	0.56	0.50
Recirculation - %	26.3	62.5	7.3	20.0
<b>Mechanical ventilation</b>				
Ventilatory mode	PSV	PCV	PCV	PCV
FiO <sub>2</sub>	0.3	0.6	1.0	0.6
PEEP – cm H <sub>2</sub> O	15	15	10	13
Plateau pressure – cm H <sub>2</sub> O	20	25	20	18
Tidal volume – mL	150	90	50	90
Respiratory rate – breaths/min	15	10	10	10
<b>Patients characteristics</b>				
Arterial pH	7.421	7.435	7.500	7.370
PaCO <sub>2</sub> – mm Hg	42	41	36	47
PvCO <sub>2</sub> – mm Hg	52	51	61	59
PaO <sub>2</sub> – mm Hg	46	45	45	37
PvO <sub>2</sub> – mm Hg	23	29	35	30
Arterial Sat O <sub>2</sub> - %	82	88	80	84
Venous Sat O <sub>2</sub> - %	43	60	58	55
Hemoglobin – g/dL	7.4	7.5	8.2	8.0
Pulmonary shunt - %	36.6	44.9	62.9	47.8
Lactate – mmol/L	1.38	1.12	2.6	2.1
Lung injury score	3.75	3.50	4.00	3.75
Temperature - °C	37.2	38.0	39.0	37.6
Total SOFA	14	17	18	12
<b>Hemodynamics</b>				
Cardiac output – L/min	8.9	9.8	11.5	10.6
Heart rate – beats/min	129	130	128	117
Mean arterial blood pressure – mm Hg	109	75	65	105
Central venous pressure – mm Hg	10	7	5	8
Inotropes in use	None	None	None	None
Vasopressors in use	None	Norepinephrine	Norepinephrine	None
<b>Sedation and analgesia</b>				
Analgesia in use	Fentanyl	Fentanyl	Fentanyl	None
Sedation in use	None	Propofol	Propofol	None
RASS	0	-1	-5	0

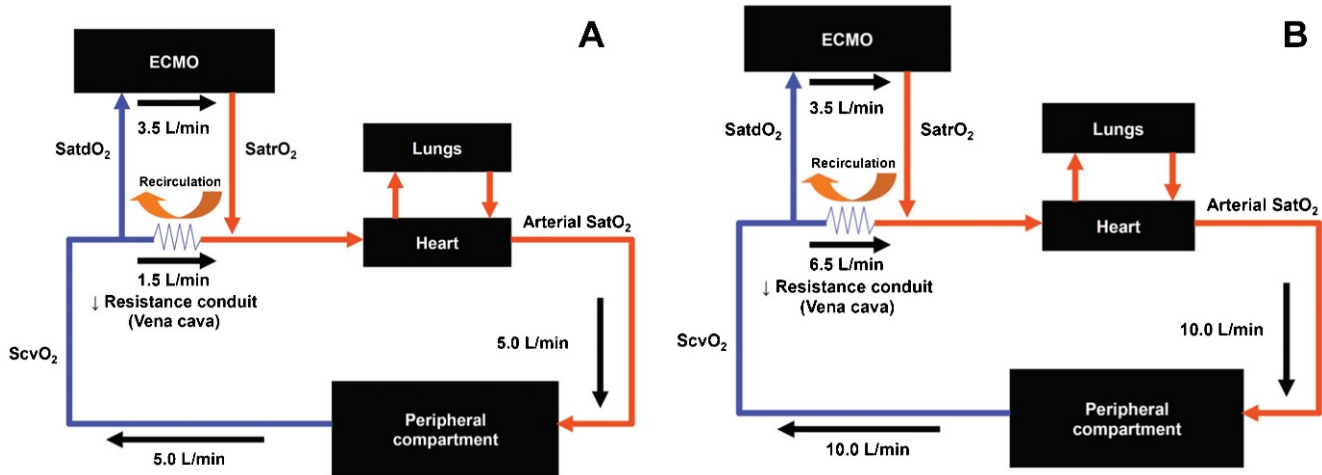
\*This was the first day of severe hypoxemia  
RASS - Richmond agitation sedation scale.

proportional to the pulmonary shunt (9). The pulmonary shunt can be modulated by decreasing the alveolar collapse, e.g., with the use of higher levels of end-expiratory pressure. The pulmonary shunt also depends on the CO, and it has been shown that reducing CO in healthy lungs slightly improves pulmonary shunting (14), an effect that is even more pronounced in injured lungs during hypoxemic respiratory failure (15). By the same token, the use of inotropic drugs can worsen pulmonary shunting (16). Oxygenation of mixed venous blood has been positively correlated with CO (17) and is an important modulator of the pulmonary shunt (14,15,18). In ICU patients, however, the response of the pulmonary shunt to venous hypoxemia is erratic, depending on systemic factors related to the underlying disease (19).

Blood recirculation from the return cannula to the drainage cannula can reduce the efficacy of the ECMO support because the membrane will oxygenate already

oxygenated blood (10), while the systemic venous blood will return to the heart without proper oxygenation. Finally, oxygenator dysfunction can also contribute to persistent hypoxemia. The presence of blood clots or water drops inside the membrane reduces the exchange surface and consequently the oxygenator's efficiency. This complication can be diagnosed by the direct visualization of thrombi inside the membrane or by the presence of low post-oxygenation PO<sub>2</sub> (Figure 2B) and high PCO<sub>2</sub>.

In summary, there are four main mechanisms of hypoxemia during VV-ECMO: a high recirculation ratio, a high pulmonary shunt, a low cardiac output to ECMO blood flow ratio (<0.6), and oxygenator dysfunction. These mechanisms can occur alone or, more frequently, in combination. Figure 1 shows the equation for the prediction of arterial oxygen saturation, using all of the concepts discussed above (9).



**Figure 1 - VV-ECMO-supported patient model.** Panel A shows a regular patient, in whom the ECMO blood flow (3.5 L/min)/cardiac output (5.0 L/min) ratio was equal to 0.7. In this condition, it is expected that only 1.5 L/min (30% of the venous return) will pass through the vena cava without oxygenation. Panel B exemplifies a hyperdynamic patient, in whom the ECMO blood flow (3.5 L/min)/cardiac output (10.0 L/min) ratio was equal to 0.35. In this example, 6.5 L/min (65% of the venous return) will pass through the vena cava without oxygenation. In the former example, if the patient has a severe lung injury with a high pulmonary shunt, he or she will most likely develop severe hypoxemia. SatdO<sub>2</sub> – oxygen saturation at the drainage cannula. ScvO<sub>2</sub> – oxygen saturation at the return cannula. SatrO<sub>2</sub> – oxygen saturation at the return cannula. According to Mesai et al. (9):

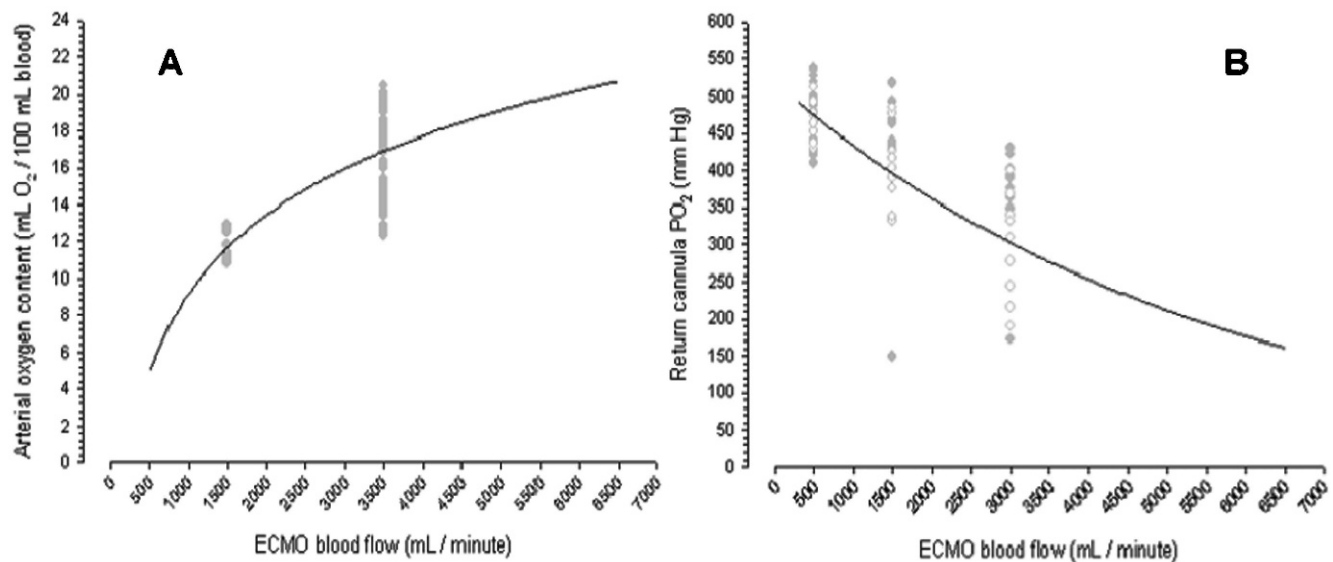
$$\text{Arterial SatO}_2 = \frac{\text{Pulmonary oxygenation}}{(\text{Residual function})} + \left( \frac{\text{ECMO effective blood flow}}{\text{Cardiac output}} \right) \times \text{SatrO}_2 + \left( \frac{1 - \text{ECMO effective blood flow}}{\text{Cardiac output}} \right) \times \text{ScvO}_2 + (0.1 \times \text{SatrO}_2)$$

$$\text{ECMO effective blood flow} = (1 - \text{recirculation ratio}) \times \text{ECMO blood flow.}$$

**Practical approach for hypoxemia during VV-ECMO support**

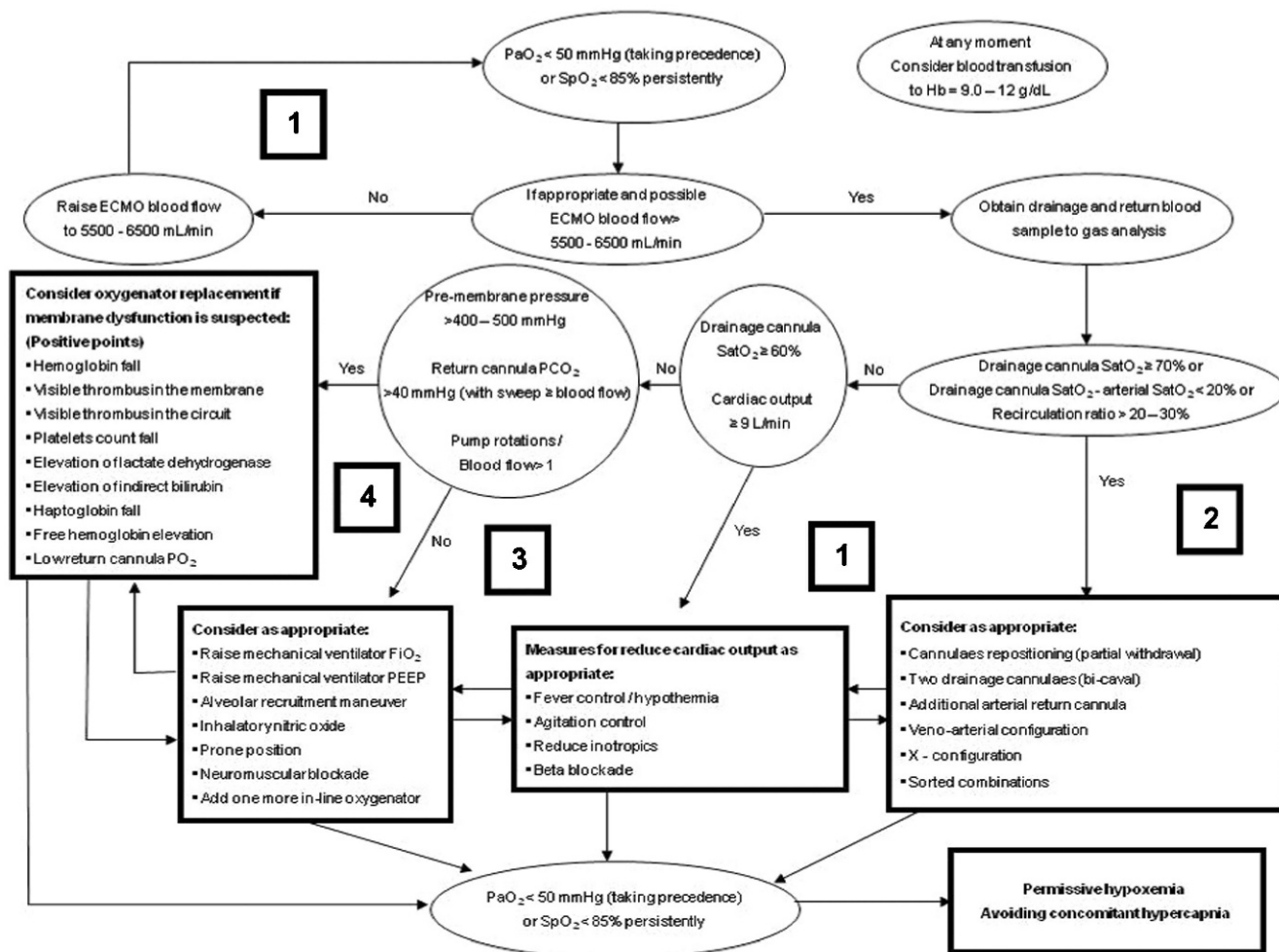
The rationale for VV-ECMO support is to maintain arterial oxygenation compatible with life and to prevent

further lung injury by allowing for the use of protective ventilatory settings. Accordingly, a low driving pressure (10 cm H<sub>2</sub>O), a high PEEP (10 - 15 cm H<sub>2</sub>O), a low respiratory rate (10 breaths/minute), and a low FiO<sub>2</sub> (0.3) have been successfully combined with VV-ECMO support



**Figure 2 - Panel A** shows the systemic arterial content of oxygen as a function of ECMO blood flow, and **Panel B** shows the expected PO<sub>2</sub> in the return cannula as a function of ECMO blood flow. Both panels were created based on a polymethylpentene oxygenator with normal function. In this graph, the original data from the swine experimental study of Park et al. were used (10). The data used presented a wide range of pre-membrane pH, drainage cannula SatO<sub>2</sub>, and drainage cannula PO<sub>2</sub>. The data were collected during a baseline clinical situation, without organ dysfunctions and after 12 hours of peritonitis and severe lung injury induction.





**Figure 3** - A stepwise approach for severe hypoxemia etiology diagnosis and resolution during VV-ECMO respiratory support. Possible causes of the persistent hypoxemia: 1. Blood flow/Cardiac output < 0.6. 2. Recirculation. 3. High pulmonary shunt. 4. Oxygenator dysfunction.

with good outcomes (2). To maintain this protective ventilation, an arterial saturation  $\geq 85\%$  or a  $\text{PaO}_2 \geq 50$  mm Hg has been considered sufficient while maintaining low alveolar ventilation (8,20). However, certain patients with refractory hypoxemia do not achieve this minimal safe oxygenation under protective ventilation settings. For these patients, we suggest a sequential approach (Figure 3), aiming for an arterial  $\text{SatO}_2 \geq 85\%$  in patients with a normal or near normal  $\text{PaCO}_2$ .

The approach presented in Figure 3 is based on the following ideas: 1) optimizing the ECMO blood flow to cardiac output ratio (initially manipulating the ECMO blood flow), 2) identifying recirculation and repositioning of the cannulae accordingly, 3) optimizing residual lung function, 4) diagnosing oxygenator dysfunction and considering its replacement, and 5) optimizing the ECMO blood flow to cardiac output ratio based on the reduction in cardiac output (avoiding fever or providing active patient cooling, decreasing oxygen consumption if necessary with neuromuscular blockers, and possibly reducing cardiac output with the use of beta-blockers after careful consideration of the potential clinical deterioration due to cardiovascular depression) (6,8). Blood transfusions to optimize the  $\text{DO}_2$  can be considered at any time.

Permissive hypoxemia is an option, according to the patient's clinical situation, when other interventions have failed. Severe ARDS patients without VV-ECMO support develop long-term neuropsychological impairment associated with hypoxemia in the acute phase of the disease (21). However, in VV-ECMO-supported severely injured patients, an arterial  $\text{SatO}_2$  as low as 70% has been allowed in awake and participative patients with normal arterial  $\text{PCO}_2$  (7), with a high survival rate (76%) and without significant long-term sequelae in health-related quality of life (7,22). Maintaining a normal  $\text{PCO}_2$  seems to be mandatory in permissive severe hypoxemia because the association of low  $\text{PO}_2$  with high  $\text{PCO}_2$  can potentially cause severe brain injury (23).

**The clinical vignettes**

**Patient 1** – She was awake and collaborative, with a high recirculation ratio and a low ECMO blood flow to cardiac output. The ventilator  $\text{FiO}_2$  was 0.3. In this patient, the ECMO blood flow was raised to 6000 mL/min when the  $\text{SpO}_2$  reached 85%.

**Patient 2** – This patient was cannulated with a femoro-femoral approach, with a high recirculation ratio and an adequate ECMO blood flow to cardiac output ratio. Due to difficulty in repositioning the cannulae, we chose to perform



alveolar recruitment. A slight improvement in oxygenation was obtained, keeping the arterial SatO<sub>2</sub> between 85 and 89%.

**Patient 3** – The patient was febrile and hyperdynamic. There was no recirculation, and the ECMO blood flow to cardiac output was low (ratio = 0.56). This patient received active interventions to control the fever, which slowly improved the hypoxemia.

**Patient 4** – This patient had a low ratio of ECMO blood flow to cardiac output and a low recirculation ratio. The ECMO blood flow was raised, thereby bringing the hypoxemia to an acceptable level.

Severe hypoxemia can occur during VV-ECMO respiratory support, and it is crucial to understand the underlying mechanisms. Knowledge of the pathophysiology of hypoxemia is important to guide specific interventions. A stepwise approach, as proposed here, can often be used to address this concerning clinical situation. When other alternatives have failed, permissive severe hypoxemia is acceptable. In this group of patients, maintaining normocapnia is essential to attenuate the risk of associated sequelae.

## AUTHOR CONTRIBUTIONS

Nunes LB, Mendes PV, Barbosa EV, Hirota AS, and Park M were responsible for the acquisition, analysis, and interpretation of the data. Nunes LB, Mendes PV, and Park M wrote the manuscript. Costa EL, Azevedo LC, and Schettino GP critically reviewed the manuscript.

## REFERENCES

1. Park M, Azevedo LC, Mendes PV, Carvalho CR, Amato MB, Schettino GP, et al. First-year experience of a Brazilian tertiary medical center in supporting severely ill patients using extracorporeal membrane oxygenation. *Clinics*. 2012;67(10):1157-63, [http://dx.doi.org/10.6061/clinics/2012\(10\)07](http://dx.doi.org/10.6061/clinics/2012(10)07).
2. Peek GJ, Mugford M, Tiruvoipati R, Wilson A, Allen E, Thalanany MM, et al. Efficacy and economic assessment of conventional ventilatory support versus extracorporeal membrane oxygenation for severe adult respiratory failure (CESAR): a multicentre randomised controlled trial. *Lancet*. 2009;374(9698):1351-63, [http://dx.doi.org/10.1016/S0140-6736\(09\)61069-2](http://dx.doi.org/10.1016/S0140-6736(09)61069-2).
3. Davies A, Jones D, Bailey M, Beca J, Bellomo R, Blackwell N, et al. Extracorporeal Membrane Oxygenation for 2009 Influenza A(H1N1) Acute Respiratory Distress Syndrome. *JAMA*. 2009;302(17):1888-95.
4. Brogan TV, Thiagarajan RR, Rycus PT, Bartlett RH, Bratton SL. Extracorporeal membrane oxygenation in adults with severe respiratory failure: a multi-center database. *Intensive Care Med*. 2009;35(12):2105-14, <http://dx.doi.org/10.1007/s00134-009-1661-7>.
5. Pham T, Combes A, Rozé H, Chevret S, Mercat A, Roch A, et al. Extracorporeal membrane oxygenation for pandemic influenza a(h1n1) induced acute respiratory distress syndrome: a cohort study and propensity-matched analysis. *Am J Respir Crit Care Med*. 2013;187(3):276-85, <http://dx.doi.org/10.1164/rccm.201205-0815OC>.
6. Guarracino F, Zangrillo A, Ruggeri L, Pieri M, Calabrò MG, Landoni G, et al.  $\beta$ -Blockers to optimize peripheral oxygenation during extracorporeal membrane oxygenation: a case series. *J Cardiothorac Vasc Anesth*. 2012;26(1):58-63, <http://dx.doi.org/10.1053/j.jvca.2011.05.013>.
7. Linden V, Palmer K, Reinhard J, Westman R, Ehren H, Granholm T, et al. High survival in adult patients with acute respiratory distress syndrome treated by extracorporeal membrane oxygenation, minimal sedation, and pressure supported ventilation. *Intensive Care Med*. 2000;26(11):1630-7.
8. Combes A, Bacchetta M, Brodie D, Muller T, Pellegrino V. Extracorporeal membrane oxygenation for respiratory failure in adults. *Curr Opin Crit Care*. 2012;18(1):99-104.
9. Messai E, Bouguerra A, Harmelin G, Di Lascio G, Cianchi G, Bonacchi M. A new formula for determining arterial oxygen saturation during venovenous extracorporeal oxygenation. *Intensive Care Med*. 2013;39(2):327-34, <http://dx.doi.org/10.1007/s00134-012-2756-0>.
10. Park M, Costa EL, Maciel AT, Silva DP, Friedrich N, Barbosa EV, et al. Determinants of oxygen and carbon dioxide transfer during extracorporeal membrane oxygenation in an experimental model of multiple organ dysfunction syndrome. *PLoS One*. 2013;8(1):e54954, <http://dx.doi.org/10.1371/journal.pone.0054954>.
11. Williams EM, Viale JP, Hamilton RM, McPeak H, Sutton L, Hahn CE. Within-breath arterial PO<sub>2</sub> oscillations in an experimental model of acute respiratory distress syndrome. *Br J Anaesth*. 2000;85(3):456-9.
12. Schmidt M, Tachon G, Devilliers C, Muller G, Hekimian G, Bréchet N, et al. Blood oxygenation and decarboxylation determinants during venovenous ECMO for respiratory failure in adults. *Intensive Care Med*. 2013;39(5):838-46, <http://dx.doi.org/10.1007/s00134-012-2785-8>.
13. Guyton AC. Determination of cardiac output by equating venous return curves with cardiac response curves. *Physiol Rev*. 1955;35(1):123-9.
14. Smith G, Cheney FW, Winter PM. The effect of change in cardiac output on intrapulmonary shunting. *Br J Anaesth*. 1974;46(5):337-42.
15. Dantzker DR, Lynch JP, Weg JG. Depression of cardiac output is a mechanism of shunt reduction in the therapy of acute respiratory failure. *Chest*. 1980;77(5):636-42, <http://dx.doi.org/10.1378/chest.77.5.636>.
16. Bryan TL, van Diepen S, Bhutani M, Shanks M, Welsh RC, Stickland MK. The effects of dobutamine and dopamine on intrapulmonary shunt and gas exchange in healthy humans. *J Appl Physiol*. 2012;113(4):541-8, <http://dx.doi.org/10.1152/jappphysiol.00404.2012>.
17. Zampieri FG, Park M, Azevedo LC, Amato MB, Costa EL. Effects of arterial oxygen tension and cardiac output on venous saturation: a mathematical modeling approach. *Clinics*. 2012;67(8):897-900, [http://dx.doi.org/10.6061/clinics/2012\(08\)07](http://dx.doi.org/10.6061/clinics/2012(08)07).
18. Dantzker DR, Brook CJ, DeHart P, Lynch JP, Weg JG. Ventilation-perfusion distributions in the adult respiratory distress syndrome. *Am Rev Respir Dis*. 1979;120(5):1039-52.
19. Rossaint R, Hahn SM, Pappert D, Falke KJ, Radermacher P. Influence of mixed venous PO<sub>2</sub> and inspired O<sub>2</sub> fraction on intrapulmonary shunt in patients with severe ARDS. *J Appl Physiol*. 1995;78(4):1531-6.
20. Sidebotham D, McGeorge A, McGuinness S, Edwards M, Willcox T, Beca J. Extracorporeal membrane oxygenation for treating severe cardiac and respiratory failure in adults: part 2-technical considerations. *J Cardiothorac Vasc Anesth*. 2010;24(1):164-72, <http://dx.doi.org/10.1053/j.jvca.2009.08.002>.
21. Mikkelsen ME, Christie JD, Lanken PN, Biester RC, Thompson BT, Bellamy SL, et al. The adult respiratory distress syndrome cognitive outcomes study: long-term neuropsychological function in survivors of acute lung injury. *Am J Respir Crit Care Med*. 2012;185(12):1307-15.
22. Lindén VB, Lidegran MK, Frisén G, Dahlgren P, Frenckner BP, Larsen F. ECMO in ARDS: a long-term follow-up study regarding pulmonary morphology and function and health-related quality of life. *Acta Anaesthesiol Scand*. 2009;53(4):489-95, <http://dx.doi.org/10.1111/j.1399-6576.2008.01808.x>.
23. Mendes PV, Moura E, Barbosa EV, Hirota AS, Scordamaglio PR, Ajar FM, et al. Challenges in patients supported with extracorporeal membrane oxygenation in Brazil. *Clinics*. 2012;67(12):1511-5, [http://dx.doi.org/10.6061/clinics/2012\(12\)27](http://dx.doi.org/10.6061/clinics/2012(12)27).

## APPENDIX

The ECMO group comprises: Luciano Cesar Pontes Azevedo, Marcelo Park, André Luiz de Oliveira Martins, Eduardo Leite Vieira Costa, Guilherme Paula Pinto Schettino, Marcelo Brito Passos Amato, Carlos Roberto Ribeiro Carvalho, Mauro Tucci, Alexandre Toledo Maciel, Eliane Silva, Leandro Utino Taniguchi, Edzângela Vasconcelos, Raquel Nardi, Michele de Nardi, Wellington da Silva, Cláudio Machtans, and Adriana Sayuri Hirota.