

RELATIONSHIP BETWEEN PANICLE DIFFERENTIATION AND MAIN STEM LEAF NUMBER IN RICE GENOTYPES AND RED RICE BIOTYPES

Nereu Augusto Streck^{1*}; Isabel Lago²; Leosane Cristina Bosco³; Gizelli Moiano de Paula²; Felipe Brendler Oliveira¹; Luana Fernandes Gabriel¹; Ana Paula Schwantes¹

¹UFSM/CCR - Depto. de Fitotecnia - 97105-900 - Santa Maria, RS - Brasil.

²UFSM/CCR - Programa de Pós-Graduação em Engenharia Agrícola.

³UFSM/CCR - Programa de Pós-Graduação em Agronomia.

*Corresponding author <nstreck1@smail.ufsm.br>

ABSTRACT: Panicle differentiation (DP) is a key developmental stage in rice (*Oryza sativa* L.) because at this stage plant switches from vegetative to reproductive development and source-sink relation changes to allocate part of the photoassimilates for growing spikelets and kernels. The objective of this study was to determine the main stem Haun Stage (HS) and the number of leaves that still have to emerge until flag leaf at PD in several cultivated rice genotypes and red rice biotypes in different sowing dates. A two-year field experiment was conducted in Santa Maria, Rio Grande do Sul State, Brazil, during the 2005–2006 and 2006–2007 growing seasons, and three sowing dates each year. Nine cultivated rice genotypes and two red rice biotypes were used. PD was identified as the R1 stage of the COUNCE scale, by sampling four plants from each genotype on a daily basis. When 50% of the sampled plants were at R1, the main stem HS was measured in 20 plants per genotype. The main stem final leaf number (FLN) was measured in these 20 plants when the collar of the flag leaf was visible. HS at PD is related to FLN in many cultivated rice genotypes and red rice biotypes, and that at PD, the number of leaves still to emerge until flag leaf is not constant for all the rice genotypes. These findings are not in agreement with reports in the literature.

Key words: *Oryza sativa* L., COUNCE scale, Haun Stage, crop management, flag leaf

RELAÇÃO ENTRE DIFERENCIAÇÃO DA PANÍCULA E NÚMERO DE FOLHAS NO COLMO PRINCIPAL EM GENÓTIPOS DE ARROZ E BIÓTIPOS DE ARROZ VERMELHO

RESUMO: A diferenciação da panícula (DP) é um importante estágio do desenvolvimento em arroz (*Oryza sativa* L.), pois é nesse estágio que a planta passa do desenvolvimento vegetativo para o desenvolvimento reprodutivo e a relação fonte-dreno muda para alocar parte dos fotoassimilados para crescimento de espiguetas e grãos. O objetivo deste estudo foi determinar o Estágio de Haun (EH) no colmo principal e o número de folhas que ainda faltam emergir até o aparecimento da folha bandeira por ocasião da DP em vários genótipos de arroz cultivado e biótipos de arroz vermelho, em diferentes datas de semeadura. Um experimento de campo foi conduzido em Santa Maria, RS, durante os anos agrícolas 2005–2006 e 2006–2007, com três datas de semeadura cada ano. Foram usados nove genótipos de arroz cultivados e dois biótipos de arroz vermelho. A DP foi identificada como o estágio R1 da escala de COUNCE, amostrando-se diariamente quatro plantas de cada genótipo. Quando 50% das plantas estavam em R1, foi medido o EH no colmo principal em 20 plantas por genótipo. O número final de folhas no colmo principal (NFF) foi observado nestas mesmas 20 plantas, quando o colar da folha bandeira estava visível. O EH na DP está relacionado com o NFF em vários dos genótipos de arroz cultivado e nos biótipos de arroz vermelho, e que o número de folhas que ainda faltam emergir na DP não é constante para todos os genótipos de arroz estudados. Estes resultados discordam com os relatados na literatura. **Palavras-chave:** *Oryza sativa* L., escala de COUNCE, Estágio de Haun, manejo, folha bandeira

INTRODUCTION

Panicle differentiation (PD) is a key developmental stage in rice (*Oryza sativa* L.) because at this stage plant switches from vegetative to reproductive

development and source-sink relation changes to allocate part of the photoassimilates for growing spikelets and kernels. From a crop management perspective, the second side-dress nitrogen is recommended at PD (Sosbai, 2005). The identification of PD stage

is destructive, which is a disadvantage because of the need of dissecting plants and trained personal (Stansel, 1975). The search for plant morphological indicators for PD that are easily identifiable with non-destructive methods is a good research rationale.

In small grain crops, including rice, the number of accumulated or emerged leaves on the main stem (NL) is often represented by the Haun Stage (HS) (Haun, 1973). The NL in rice is related to the timing of several plant developmental stages such as tillering (Tivet et al., 2001; Jaffuel & Dauzat, 2005; Watanabe et al., 2005), PD (Ellis et al., 1993; Lee et al., 2001; Watanabe et al., 2005), booting and anthesis (Counce et al., 2000; Watanabe et al., 2005). Yin & Kropff (1998) reported that at PD, there are still about three leaves to appear until the flag leaf appears at the whorl of the main stem. Freitas et al. (2006) found that PD occurs when there are seven fully expanded leaves on the main stem and did not vary among three genotypes varying in developmental cycle and in three sowing dates. Streck et al. (2006a) showed that final leaf number (FLN) varied among seven rice cultivars and among sowing dates. Combing the results by Yin & Kropff (1998) and Streck et al. (2006a) implies that the NL at PD varies among genotypes and sowing dates, which is conflicting with the results reported by Freitas et al. (2006). The objective of this study was to determine the main stem HS and the number of leaves left to emerge until flag leaf at panicle differentiation in several cultivated rice genotypes and in two red rice biotypes in different sowing dates.

MATERIAL AND METHODS

A two-year field experiment was conducted during the 2005–2006 and 2006–2007 growing seasons in Santa Maria, Rio Grande do Sul State, Brazil (29°43' S, 53° 43' W, and altitude: 95 m). In the 2005–2006 growing season, plants were grown in 12 liter (30 cm diameter and 26 cm height) pots and in the 2006–2007 growing season, plants were grown both in pots and in a 10-ha paddy rice field located about 600 m from the pot experiment site. Pots were buried in the soil to maintain soil temperature similar to the soil temperature of the surrounding area. Pot spacing was 1.5 m × 0.8 m, so that shading was not a major factor affecting plant growth (Peterson et al., 1984). Plots in the rice pad were composed of four 1 m rows spaced 17 cm among rows. Soil type at the experimental site was a Rhodic Paleudalf (USDA Taxonomy). The experimental design was a completely randomized, with four replications. A replication was a pot in the pot experiment and a plot in the field experiment.

For the pot-grown plants, three sowing dates (day/month/year) were used each year: 25/09/2005, 26/11/2005 and 02/02/2006 in the 2005–2006 growing seasons, and 08/11/2006, 13/12/2006 and 16/01/2007 in the 2006–2007 growing season. Each replication was a pot with 15 plants. Nine cultivated rice genotypes (IRGA 421, IRGA 416, IRGA 417, IRGA 420, BR- IRGA 409, BRS 7 TAIM, EEA 406, EPAGRI 109 and a hybrid (not commercially released yet by the Instituto Rio-Grandense do Arroz - IRGA) and two red rice biotypes (awned yellow-hull and awned black-hull) were used in the pot experiment. Red rice was included in the study because it is a major weed in paddy rice fields in Southern Brazil (Marchezan, 1994; Marchezan et al., 2004). In the paddy rice field, two sowing dates were used (13/12/2006 and 16/01/2007) with two cultivated rice cultivars (IRGA 421 and EPAGRI 109).

The rice genotypes were chosen because they are widely grown in Southern Brazil, they represent two subspecies of *Oryza sativa* (*japonica* and *indica*), and they have a broad range of developmental cycles, varying from very early (IRGA 421) to late (EPAGRI 109) maturation. The red rice biotypes are often found in paddy rice fields in Southern Brazil, plants have broad leaves and are tall. The cultivar EEA 406 is an old, japonica rice cultivar often used as a simulator of red rice in crop-weed competition studies (Agostinetto, 2003; Agostinetto et al., 2004). The wide range of sowing dates within each year was chosen to have plants growing and developing under different temperatures and photoperiods, which render rice plants different FLN (Streck et al., 2006a), and correspond to sowing dates before, during, and after the recommended sowing calendar for this location, which is from 01st of October to 10th of December (Sosbai, 2005).

Fertilization followed local recommendations for irrigated rice (Sosbai, 2005). In the pots, 20 g per pot of 7-11-9 fertilizer was used at sowing. Nitrogen dressing was applied at the beginning of tillering (V4 stage of the Counce et al., 2000 scale) and at panicle differentiation (R1 stage of Counce et al., 2000 scale) with urea at a rate of 8.5 g per pot. The same fertilizer rates were applied in the field plots, corresponding to 300 kg ha⁻¹ of 7-11-9 NPK fertilizer and 222 kg ha⁻¹ of urea. At V3 stage of the Counce et al. (2000) scale, plants in the pots were thinned to 15 plants in each pot, resulting in a plant density of about 200 plants m⁻², which is a plant density commonly found in commercial rice fields in Southern Brazil. The same plant density was used in the field plots. Irrigation in both the pots and the paddy field was performed to keep a continuous 5–7 cm water layer above soil surface (flooded soil) from V3 onwards.

Five plants in each pot and five plants in the central row of the paddy field plots were tagged with colored wires one week after plant emergence. Plants located in the central part of the pot were selected for tagging. In doing so, we tried to achieve a red-far red balance similar to the one encountered in a paddy rice field, as this balance is affected by the proximity of nearest neighbor plant and affects development in small grains (Wilhelm & McMaster, 1995).

Panicle differentiation (Stage R1 of the Counce et al., 2000 scale) was identified by sampling four plants from each genotype on a daily basis. PD was identified by sampling four plants (one plant from each replication) and cutting the main stem of these plants length wise, and a 2 mm long white and a fuzzy panicle similar to a small cotton ball was visible (Stansel, 1975). When 50% (two out of four) plants were at R1, the main stem HS, which is the number of fully expanded leaves plus the ratio of the length of the expanding leaf to the penultimate leaf (Haun, 1973), was measured in the five tagged plants per replication. The main stem final leaf number (FLN) was counted on the main stem of the tagged plants when the collar of the flag leaf was visible.

Statistical analysis was performed assuming a two-factor experiment within years in the pot experiment and for the paddy rice field experiment, with factor A = genotype and factor D = sowing date. Variables of interest were HS at R1, the number of leaves still to appear until flag leaf at R1 represented by the difference between main stem HS at R1 [FLN – (HS at R1)] and FLN. Means of these variables were distinguished by Tukey test ($p < 0.05$). Variables HS at R1 and [FLN – (HS at R1)] were regressed against

FLN and the probability (p) values of the simple linear regression are presented.

RESULTS AND DISCUSSION

Final leaf number (FLN) varied among genotypes and among sowing dates from about 10 to 19 leaves. Among genotypes, early cultivars had lower FLN (e.g. IRGA 421 had FLN from about 10 to 13 leaves) whereas late cultivars had higher FLN (e.g. EPAGRI 109 had FLN from about 16 to 19 leaves). These results are in agreement with previous reports that developmental cycle in rice is related to FLN, i. e., the greater the FLN the longer the developmental cycle (Streck et al., 2006b). Among sowing dates, FLN was greater in early sowing dates and lower in late sowing dates, which is also in agreement with previous studies (Streck et al., 2006a). This wide range in FLN due to different genotypes and sowing dates provides a rich data set to test the hypothesis of this study, which was that the HS can be used as a plant morphological indicator to identify PD in rice and red rice, and that the HS at PD varies among genotypes and among sowing dates.

Analysis of variance showed significant effect of the factors genotype and sowing date for the variables HS at R1, FLN – (HS at R1) and FLN in both years for the pot experiment (Table 1). The mean square was greater for the factor genotype than for the factor sowing date, except for FLN in the 2006–2007 growing season indicating that, in general, both variables are more affected by the genetic constitution than by the environment. The interaction genotype \times sowing date was significant for all three variables in

Table 1 - Mean square values of the ANOVA for the variables Haun Stage at panicle differentiation (HS at R1), difference between main stem final leaf number and HS at R1 [FLN – (HS at R1)] and final leaf number (FLN) in nine cultivated rice genotypes and two red rice biotypes grown in pots in three sowing dates during two growing seasons. Santa Maria, RS, 2005–2007.

Sources of variations	Mean Square		
	HS at R1	FLN – (HS at R1)	FLN
2005-2006 Growing season			
Genotype (A)	16.40*	5.00*	14.38*
Sowing date (D)	10.85*	4.70*	3.28*
A \times D	0.74*	1.61*	0.56*
Coefficient of Variation (%)	4.05	19.58	4.15
2006-2007 Growing season			
Genotype (A)	10.65*	0.74*	51.69*
Sowing date (D)	1.44*	0.28	55.39*
A \times D	0.53*	0.44*	2.47*
Coefficient of Variation (%)	3.14	15.67	5.11

*Significant at 5%.

both years, and therefore the statistical analysis was performed accordingly (Table 2, 3 and 4). Plants in the 16/01/2007 sowing date died before R1 due to unknown factors, therefore there are no data in the blank spaces of Tables 2, 3 and 4. We missed the time of R1 for cultivar IRGA 421 in the second sowing date in the paddy rice field experiment and therefore the ANOVA was performed comparing the two cultivars in the first sowing date and comparing the two sowing dates only for cultivar EPAGRI 109 (Table 5).

Among genotypes, the HS at R1 was the greatest for cultivar EPAGRI 109 and the lowest for cultivar IRGA 421 in all sowing dates in both years in the pot experiment (Table 2) and in the paddy rice field experiment (Table 5). These two cultivars are very distinct in FLN (Table 4) and developmental cycle (very early and late). Other rice cultivars and red rice biotypes were intermediate in FLN (Table 4) and devel-

opmental cycle between these two cultivars, and the HS at R1 values were intermediate too. These results suggest a relationship between HS at R1 and FLN. To test this hypothesis, we plotted HS at R1 against FLN pooling data from all genotypes in Figure 1a (year 2005–2006) and in Figure 1c (year 2006–2007) and a highly significant linear positive relationship was evident for both years ($R^2 = 0.73$ and $R^2 = 0.88$). Considering the two growing seasons, FLN varied from about 10 to 19 leaves and HS at R1 varied from about 9 to 16 leaves. The slope of the linear regressions indicates that there is a general increase of 0.6 and 0.8 HS at R1 for each FLN increase. Among sowing dates, in general the HS at R1 decreased as sowing date was delayed in both years in the pot experiment (Table 2) and in the paddy rice field experiment (Table 5). These results are also associated with a decrease in FLN with delayed sowing dates (Table 4 and 5).

Table 2 - Haun Stage at panicle differentiation (HS at R1) in nine cultivated rice genotypes and two red rice biotypes grown in pots in three sowing dates during two growing seasons. Santa Maria, RS, Brazil, 2005–2007.

Genotype	Sowing date		
	DATE 1*	DATE 2	DATE 3
2005-2006 growing season			
IRGA 421	10.9 Ae ⁺	9.7 Bd	9.5 Be
IRGA 416	12.8 Abc	12.1 Ac	11.1 Bcd
IRGA 417	13.4 Ab	13.7 Ab	11.8 Bbcd
IRGA 420	12.2 Acd	12.1 Ac	11.2 Bcd
BRS 7 TAIM	12.8 Abc	12.8 Abc	12.8 Ab
BR-IRGA 409	13.1 Abc	12.7 Abc	11.9 Bbcd
EPAGRI 109	14.9 ABa	15.2 Aa	14.2 Ba
EEA 406	11.5 Ade	12.1 Ac	12.1 Abc
Hybrid	11.3 Ade	11.7 Ac	11.0 Acd
Yellow hull red rice	12.2 Acd	12.3 Ac	10.9 Bd
Black hull red rice	12.1 Acd	11.8 Ac	11.0 Bcd
2006-2007 growing season			
IRGA 421	9.1 Ae	9.4 Ae	-
IRGA 416	12.1 Ac	10.7 Bd	-
IRGA 417	12.3 Abc	12.0 Abc	-
IRGA 420	11.1 Ad	11.3 Acd	-
BRS 7 TAIM	12.5 Abc	11.7 Bc	-
BR-IRGA 409	13.1 Aab	12.8 Aab	-
EPAGRI 109	13.4 Aa	12.9 Aa	-
EEA 406	10.4 Ad	10.6 Ad	-
Hybrid	10.7 Ad	10.8 Ad	-
Yellow hull red rice	11.2 Ad	10.6 Bd	-
Black hull red rice	10.6 Ad	10.5 Ad	-

*For the 2005–2006 growing season, DATE 1 = 25/09/2005, DATE 2 = 26/11/2005, DATE 3 = 02/02/2006. For the 2006–2007 growing season, DATE 1 = 08/11/2006, DATE 2 = 13/12/2006. ⁺ Means followed by the same upper case letters within rows and lower case letters within columns are not different (Tukey test, $p < 0.05$).

Table 3 - Difference between main stem final leaf number and HS at R1 [FLN – (HS at R1)] in nine cultivated rice genotypes and two red rice biotypes grown in pots in three sowing dates during two growing seasons. Santa Maria, RS, Brazil, 2005-2007.

Genotype	Sowing date		
	DATE 1*	DATE 2	DATE 3
2005-2006 growing season			
IRGA 421	2.2 Adef ⁺	2.9 Abc	2.0 Ac
IRGA 416	2.6 Bcdef	3.3 ABbc	3.8 Aab
IRGA 417	3.0 Abcde	3.1 Abc	3.9 Aa
IRGA 420	3.0 ABbcde	3.6 Aabc	2.5 Bbc
BRS 7 TAIM	4.0 Aab	3.0 Bbc	2.3 Bc
BR-IRGA 409	5.1 Aa	4.9 Aa	3.1 Babc
EPAGRI 109	3.7 Abc	3.4 Abc	2.4 Bc
EEA 406	1.8 Aef	2.4 Ac	2.2 Ac
Hybrid	2.9 Abcdef	2.8 Abc	2.3 Ac
Yellow hull red rice	3.4 Abcd	4.1 Aab	2.0 Bc
Black hull red rice	1.5 Af	2.5 Ac	2.4 Ac
2006-2007 growing season			
IRGA 421	2.2 Aabc	2.1 Aab	-
IRGA 416	2.3 Aabc	2.3 Aab	-
IRGA 417	2.5 Aabc	2.9 Aa	-
IRGA 420	1.8 Ac	1.8 Ab	-
BRS 7 TAIM	1.8 Bc	2.4 Aab	-
BR-IRGA 409	1.9 Ac	2.2 Aab	-
EPAGRI 109	2.9 Aa	2.7 Aa	-
EEA 406	2.8 Aab	1.7 Bb	-
Hybrid	2.5 Aabc	2.1 Aab	-
Yellow hull red rice	2.5 Aabc	2.1 Aab	-
Black hull red rice	2.0 Abc	1.6 Ab	-

*For the 2005–2006 growing season, DATE 1 = 25/09/2005, DATE 2 = 26/11/2005, DATE 3 = 02/02/2006. For the 2006–2007 growing season, DATE 1 = 08/11/2006, DATE 2 = 13/12/2006. ⁺ Means followed by the same upper case letters within rows and lower case letters within columns are not different (Tukey test, $p < 0.05$).

With regard to the variable leaf number still to appear at R1 [FLN – (HS at R1)], differences among genotypes, among sowing dates and among years were small (two leaves at the most) but significant (Table 3 and 5). Among genotypes, the greatest FLN – (HS at R1) was for cultivar EPAGRI 109 and the lowest for cultivar IRGA 417. The later was not different from other genotypes such as IRGA 420, BRS 7 TAIM, EEA 406, the hybrid and the black hull red rice during the 2005–2006 growing season, and it was different only from the EPAGRI 109 during the 2006–2007 growing season. These results indicate a weak relationship between the variable FLN – (HS at R1) and FLN. This weak relationship is apparent in Figures 1b and 1d, where we plotted all data pooled. The slope of the linear regression was significant because of the high number of points but the R^2 was low for both growing sea-

sons, especially in 2006–2007 (Figure 1d). Among sowing dates, differences of FLN – (HS at R1) are smaller, with the lowest values in general observed in the latest sowing date.

Because both variables HS at R1 and FLN – (HS at R1) were somehow related to FLN, we regressed these two variables against FLN for each genotype in each growing season (Table 6 and 7). For the variable HS at R1, five out of 11 genotypes (IRGA 420, BR-IRGA 409, EPAGRI 109, Hybrid, and yellow hull red rice) in the 2005–2006 growing season, and five out of 11 genotypes (IRGA 416, IRGA 417, IRGA 420, EPAGRI 109, and black hull red rice) in the 2006–2007 growing season, had R^2 above 0.5 with the p value of the linear regression highly significant ($p < 1\%$), indicating linear relationship between these two variables (Table 6). For the variable FLN – (HS at R1), the R^2

Table 4 - Main stem final leaf number (FLN) in nine cultivated rice genotypes and two red rice biotypes grown in pots in three sowing dates during two growing seasons. Santa Maria, RS, Brazil, 2005–2007.

Genotype	Sowing date		
	DATE 1*	DATE 2	DATE 3
2005-2006 growing season			
IRGA 421	13.0 Fa ⁺	12.5 Fb	11.0 Fc
IRGA 416	15.3 CDa	15.3 CDa	14.8 BCb
IRGA 417	16.3 Ca	16.3 BCa	15.3 Bb
IRGA 420	15.3 CDa	15.5 CDa	13.3 DEb
BRS 7 TAIM	16.5 BCa	15.8 Cb	14.8 BCc
BR-IRGA 409	17.8 ABa	17.3 Bb	15.0 Bc
EPAGRI 109	18.3 Aa	18.5 Aa	16.5 Ab
EEA 406	13.3 EFc	14.5 DEa	13.8 CDb
Hybrid	14.3 DEa	14.0 Ea	12.8 DEFb
Yellow hull red rice	15.5 Ca	15.8 Ca	12.5 EFb
Black hull red rice	13.5 EFb	14.0 Ea	13.3 DEb
2006-2007 growing season			
IRGA 421	10.8 Fa	11.0 Ea	-
IRGA 416	14.0 BCa	12.8 BCb	-
IRGA 417	14.5 Ba	14.5 Aa	-
IRGA 420	12.3 Eb	12.8 BCa	-
BRS 7 TAIM	13.8 BCa	13.5 Bb	-
BR-IRGA 409	15.0 Aa	14.8 Aa	-
EPAGRI 109	15.8 Aa	15.0 Ab	-
EEA 406	12.8 DEa	12.0 CDb	-
Hybrid	12.8 DEa	12.5 CDb	-
Yellow hull red rice	13.3 CDa	12.3 CDb	-
Black hull red rice	12.3 Ea	11.8 DEb	-

*For the 2005-2006 growing season, DATE 1 = 25/09/2005, DATE 2 = 26/11/2005, DATE 3 = 02/02/2006. For the 2006–2007 growing season, DATE 1 = 08/11/2006, DATE 2 = 13/12/2006. ⁺ Means followed by the same upper case letters within rows and lower case letters within columns are not different (Tukey test, $p < 0.05$).

Table 5 - Haun Stage at panicle differentiation (HS at R1), difference between main stem final leaf number and HS at R1 [FLN – (HS at R1)] and final leaf number (FLN) in two cultivated rice genotypes grown in a paddy rice field in two sowing dates. Santa Maria, RS, Brazil, 2006-2007.

Genotype	HS at R1		FLN - (HS at R1)		FLN	
	DATE 1*	DATE 2	DATE 1	DATE 2	DATE 1	DATE 2
IRGA 421	10.3 b ⁺	-	2.1 a	-	12.3 b	-
EPAGRI 109	13.5 aA	12.2 B	2.2 aA	2.4 A	15.6 aA	14.6 B

*DATE 1 = 13/12/2006, DATE 2 = 16/01/2007. ⁺ Means followed by upper case letters within rows and the same lower case letters within columns are not different (Tukey test, $p < 0.05$).

was above 0.5 and $p < 1\%$ in six out of 11 genotypes (IRGA 420, BRS 7 TAIM, BR-IRGA 409, EPAGRI 109, EEA 406, and yellow hull red rice) in the 2005–2006 growing season, and in two out of 11 genotypes (EEA 406 and hybrid) in the 2006–2007 growing season (Table 7). These results indicate firstly that R1 is related to FLN within a growing season at least in some rice genotypes, and secondly that at R1 the number of

leaves still to emerge until flag leaf is less related to main stem FLN, but still affected by FLN in some genotypes.

The results of this study are not in agreement with the ones reported by Freitas et al. (2006) that R1 occurs when there are seven expanded leaves on main stem. The main stem leaf number at R1 obtained in this study is 2 to 8 leaves greater than the value of 7 leaves reported by Freitas et al. (2006). This differ-

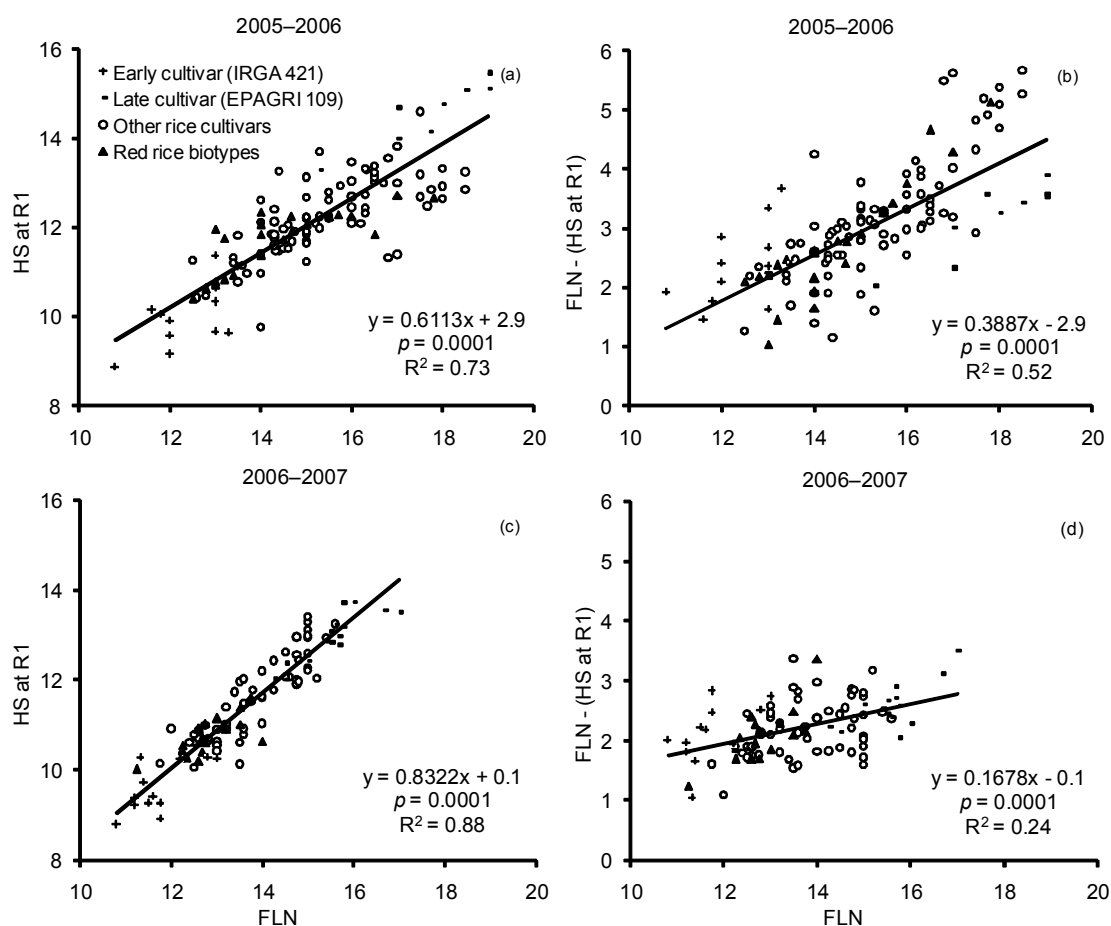


Figure 1 - Relationship between (a, c) main stem Haun Stage at panicle differentiation (HS at R1) and main stem final leaf number (FLN) and between (b, d) the difference between main stem final leaf number and HS at R1 [FLN - (HS at R1)] and FLN. Santa Maria, RS, Brazil, 2005-2007. Data of nine cultivated rice genotypes and two red rice biotypes are pooled. Each point is one replication (average of five plants). p = probability value.

ence can have considerable impact on field management practices such as fertilizer application in a rice pad. For instance, the second nitrogen dressing in rice is recommended at R1 (Sosbai, 2005). If R1 is estimated based on main stem leaf number, the 2 to 8 leaves difference corresponds to 1 to 4 weeks difference in calendar days, which can affect nitrogen use efficiency by the rice canopy. Another impact of such difference is when LN is used to estimate the end of the photoperiod-sensitive phase in rice, which ends at around R1 (Yin et al., 1997).

The number of leaves still to appear until flag leaf at R1 was reported to be constant at 3 leaves in a previous study (Yin & Kropff, 1998). Our results indicate that this assumption is not correct for all rice genotypes, as this variable was a function of FLN in some genotypes (Table 7, Figure 1b). Furthermore, the number of leaves still to emerge at R1 varied from values as low as 1 leaf to values as high as 5 or 6 (Figure 1b and 1d). These results indicate plasticity in cultivated rice and red rice development and a reminder

that reproductive development and vegetative development are related but independent processes.

Finally, the difference of the variables HS at R1 and FLN - (HS at R1) between plants grown in the pots and in the paddy rice field in the 2006-2007 growing season was not significant (ANOVA not shown). These results indicate that the data collected in the pots in both years can be extended to a rice field.

ACKNOWLEDGEMENTS

To the Instituto Rio Grandense do Arroz (IRGA) for providing the seeds and to anonymous peer reviewers for valuable comments on early versions of the manuscript. The authors gratefully thank the students Lidiane Cristine Walter, Hamilton Telles Rosa, Cátia Camera, and Flávia Kaufmann Samborinha for their assistance in collecting data. Funding from Conselho Nacional de Desenvolvimento Científico e Tecnológico - CNPq - at the Ministry of Science and Technology of Brazil to N.A. Streck (Bolsa de Produtividade em Pesquisa)

Table 6 - Equation, probability (p) value, and coefficient of determination (R^2) of the linear regression of main stem Haun Stage at panicle differentiation (HS at R1 = y) against main stem final leaf number (FLN = x) in nine cultivated rice genotypes and two red rice biotypes in two growing seasons. Santa Maria, RS, Brazil, 2005–2007.

Genotype	Linear Regression		
	Equation	p	R^2
2005-2006 growing season			
IRGA 421	$y = 0.572x + 2.9$	0.0265	0.40
IRGA 416	$y = 0.4262x + 5.5$	0.2021	0.15
IRGA 417	$y = 0.8159x - 0.3$	0.0244	0.41
IRGA 420	$y = 0.4873x + 4.6$	0.0003	0.75
BRS 7 TAIM	$y = 0.0432x + 12.1$	0.8049	0.01
BR-IRGA 409	$y = 0.2933x + 7.6$	0.0151	0.55
EPAGRI 109	$y = 0.5288x + 5.3$	0.0001	0.84
EEA 406	$y = 0.2949x + 7.8$	0.0613	0.33
Hybrid	$y = 0.7037x + 1.5$	0.0001	0.85
Yellow hull red rice	$y = 0.398x + 5.8$	0.0001	0.79
Black hull red rice	$y = 0.5991x + 3.3$	0.0484	0.36
2006-2007 growing season			
IRGA 421	$y = 0.5694x + 2.9$	0.0159	0.46
IRGA 416	$y = 0.7635x + 0.9$	0.0027	0.80
IRGA 417	$y = 0.8143x + 0.1$	0.0117	0.68
IRGA 420	$y = 0.8549x + 0.1$	0.0015	0.83
BRS 7 TAIM	$y = 0.7061x + 2.1$	0.0786	0.43
BR-IRGA 409	$y = 0.4225x + 6.6$	0.5528	0.06
EPAGRI 109	$y = 0.6698x + 2.6$	0.0001	0.71
EEA 406	$y = -0.0894x + 11.6$	0.6895	0.03
Hybrid	$y = 0.0974x + 9.5$	0.6557	0.03
Yellow hull red rice	$y = 0.4425x + 5.0$	0.1703	0.29
Black hull red rice	$y = 0.6007x + 3.1$	0.0108	0.69

and to F.B. Oliveira (Bolsa PIBIC/CNPq/UFSM) and from Coordenação de Aperfeiçoamento de Pessoal de Nível Superior - CAPES - at the Ministry of Education of Brazil to I. Lago, L.C. Bosco and G.M. de Paula (Bolsa de Mestrado) are greatly acknowledged.

REFERENCES

- AGOSTINETTO, D. **Aplicação de modelos matemáticos para estimar interferência de genótipos de arroz concorrentes e níveis de dano econômico em arroz irrigado**. Porto Alegre: UFRGS, 2003. 200p. (Doutorado).
- AGOSTINETTO, D.; FLECK, N.G.; RIZZARDI, M.A.; BIANCHI, M.A.; SILVA, P.R.F. Comparação de modelos matemáticos na estimativa das perdas de produtividade de grãos em arroz irrigado. **Pesquisa Agropecuária Brasileira**, v.39, p.847-856, 2004.
- COUNCE, P.; KEISLING, T.C.; MITCHELL, A.J. A uniform, objective, and adaptive system for expressing rice development. **Crop Science**, v.40, p.436-443, 2000.
- ELLIS, R.H.; QI, A.; SUMMERFIELD, R.J.; ROBERTS, E.H. Rates of leaf appearance and panicle development in rice (*Oryza sativa* L.): a comparison at three temperatures. **Agricultural Forest Meteorology**, v.66, p.129-138, 1993.
- FREITAS, T.F.S.; SILVA, P.R.F.; STRIEDER, L.M.; SILVA, A.A. Validação de escala de desenvolvimento para cultivares brasileiras de arroz irrigado. **Ciência Rural**, v.36, p.404-410, 2006.
- HAUN, J.R. Visual quantification of wheat development. **Agronomy Journal**, v.65, p.116-119, 1973.
- JAFFUEL, S.; DAUZAT, J. Synchronism of leaf and tiller emergence relative to position and to main stem development stage in a rice cultivar. **Annals of Botany**, v.95, p.401-412, 2005.
- LEE, C.K.; LEE, B.W.; SHIN, J.C.; YOON, Y.H. Heading date and final leaf number as affected by sowing date and prediction of heading date based on leaf appearance model in rice. **Korean Journal of Crop Science**, v.46, p.195-201, 2001.
- MARCHEZAN, E. Arroz vermelho: caracterização, prejuízos e controle. **Ciência Rural**, v.24, p.415-421, 1994.
- MARCHEZAN, E.; ÁVILA, L.A.; MAGALHÃES JÚNIOR, A.M.; MACHADO, S.L.; PETRINI, J.A. Controle do arroz vermelho. In: GOMES, A.S.; MAGALHÃES JÚNIOR, A.M. **Arroz irrigado no Sul do Brasil**. Brasília: Embrapa, 2004. p.547-573.
- PETERSON, C.M.; KLEPPER, B.; PUMPHREY, F.V.; RICKMAN, R.W. Restricted rooting decreases tillering and growth of winter wheat. **Agronomy Journal**, v.76, p.861-863, 1984.
- SOCIEDADE SUL BRASILEIRA DE ARROZ IRRIGADO - SOSBAI. **Arroz irrigado: recomendações técnicas para o sul do Brasil**. Santa Maria: SOSBAI, 2005. 159p.

Table 7 - Equation, probability (p) value, and coefficient of determination (R^2) of the linear regression of difference between main stem final leaf number and HS at R1 [FLN – (HS at R1) = y] against main stem final leaf number (FLN = y) in nine cultivated rice genotypes and two red rice biotypes in two growing seasons. Santa Maria, RS, Brazil, 2005–2007.

Genotype	Linear Regression		
	Equation	p	R^2
2005-2006 growing season			
IRGA 421	$y = 0.428x - 2.9$	0.0805	0.27
IRGA 416	$y = 0.5738x - 5.5$	0.0985	0.25
IRGA 417	$y = 0.1841x + 0.3$	0.5629	0.03
IRGA 420	$y = 0.5127x - 4.6$	0.0002	0.76
BRS 7 TAIM	$y = 0.9568x - 12.1$	0.0001	0.80
BR-IRGA 409	$y = 0.7067x - 7.6$	0.0001	0.87
EPAGRI 109	$y = 0.4712x - 5.3$	0.0002	0.80
EEA 406	$y = 0.7051x - 7.8$	0.0007	0.74
Hybrid	$y = 0.2963x - 1.5$	0.0104	0.50
Yellow hull red rice	$y = 0.602x - 5.8$	0.0001	0.90
Black hull red rice	$y = 0.4009x - 3.3$	0.1631	0.20
2006-2007 growing season			
IRGA 421	$y = 0.4306x - 2.9$	0.0532	0.32
IRGA 416	$y = 0.2365x - 0.9$	0.1806	0.28
IRGA 417	$y = 0.1857x - 0.1$	0.4462	0.10
IRGA 420	$y = 0.1451x - 0.1$	0.3851	0.13
BRS 7 TAIM	$y = 0.2939x - 2.1$	0.4121	0.11
BR-IRGA 409	$y = 0.5775x - 6.6$	0.4232	0.11
EPAGRI 109	$y = 0.3302x - 2.6$	0.0112	0.38
EEA 406	$y = 1.0894x - 11.6$	0.0022	0.81
Hybrid	$y = 0.9026x - 9.5$	0.0048	0.76
Yellow hull red rice	$y = 0.5575x - 5.0$	0.0974	0.39
Black hull red rice	$y = 0.3993x - 3.1$	0.0517	0.49

STANSEL, J.W. The rice plant: its development and yield. In: MILLER, J.C. **Six decades of rice research in Texas**. College Station: Texas A&M University, 1975. p.9-21. (Research Monograph, 4).

STRECK, N.A.; BOSCO, L.C.; MICHELON, S.; ROSA, H.T.; WALTER, L.C.; PAULA, G.M.; CAMERA, C.; LAGO, I.; MARCOLIN, E. Avaliação da resposta ao fotoperíodo em genótipos de arroz irrigado (*Oryza sativa* L.). **Bragantia**, v.65, p.533-541, 2006a.

STRECK, N.A.; BOSCO, L.C.; MICHELON, S.; WALTER, L.C.; MARCOLIN, E. Duração do ciclo de desenvolvimento de cultivares de arroz em função da emissão de folhas no colmo principal. **Ciência Rural**, v.36, p.1086-1093, 2006b.

TIVET, F.; PINHEIRO, B.S.; RAISSAC, M.; DINGKUHN, M. Leaf blade dimensions of rice (*Oryza sativa* L. and *Oryza glaberrima* Steud.). Relationship between tillers and the main stem. **Annals of Botany**, v.88, p.507-511, 2001.

WATANABE, T.; HANAN, J.S.; ROOM, P.M.; HASEGAWA, T.; NAKAGAWA, H.; TAKAHASHI, W. Rice morphogenesis and plant architecture: measurement, specification and the reconstruction of structural development by 3D architectural modeling. **Annals of Botany**, v.95, p.1131-1143, 2005.

WILHELM, W.W.; McMASTER, G.S. Importance of the phyllochron in studying development and growth in grasses. **Crop Science**, v.35, p.1-3, 1995.

YIN, X.; KROPFF, M.J.; YNALVEZ, M.A. Photoperiodically sensitive and insensitive phases of preflowering in rice. **Crop Science**, v.37, p.182-190, 1997.

YIN, X.; KROPFF, M.J. The effect of photoperiod on interval between panicle initiation and flowering in rice. **Field Crops Research**, v.57, p.301-307, 1998.

Received September 03, 2007

Accepted August 25, 2008